



The making of the the Linking Melton South mosaic sign



The 'Welcome to Melton South' sign is part of a series of place-making initiatives, led by Linking Melton South. Linking Melton South is a community based project facilitated by Djerriwarrh Health Services. Linking Melton South has had a focus on place-making which is about engaging the community to help make public spaces more visually appealing, and to create spaces that bring people together.

The 'Welcome to Melton South' sign has been created through community mosaic workshops led by a local artist and school teacher from Melton South Primary School, Kate Barta. Through these workshops over 300 Melton South residents have had the opportunity to design and construct the art work.

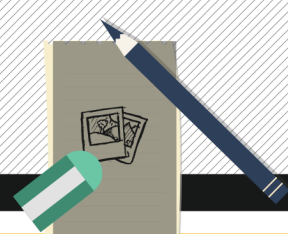


Place-making workshops



#2

#1



Designing through community consultations



#3

Promotion



Mosaic to link community
A community mosaic is the next project on the agenda for Linking Melton South. And residents are invited to help with its creation, destined for the wall of the Melton South laundrette. Linking Melton South, a community development initiative of Djerriwarrh Health Services, brings forward projects that "create spaces that bring people together", helping to make public places more appealing. DJHS's acting chief executive James Rabelli urged people to help create the mural, which will feature a dog named Linkin and reads 'Welcome to Melton South'. "The Linking Melton South resident group has chosen mosaic as the art form for this project," Mr Rabelli said. "Mosaic art provides everyone the opportunity to have a go and be part of an artwork that will become a Melton South attraction." The mosaic will be developed during a series of workshops, to be led by local artist and school teacher Kate Barta, with the finished product destined for the corner of Exford and Brookhys roads. Mr Rabelli said this location was selected by the community because it was considered to be the heart of Melton South. The workshops will be held at the Melton South Community, 41 Exford Road, during the next six weeks. For more about the project and the workshops, visit facebook.com/linkingmeltonsouth. **Sameyya Hanbey**

#4



Mosaic workshops



Contact us if you have ideas about how we can make Melton South an even better place to live

Ask for Health Promotion on 9361 9300 | lishac@djhs.org.au | www.facebook.com/linkingmeltonsouth



djerriwarrh health services
health hospital community
bacchus marsh - melton - caroline springs